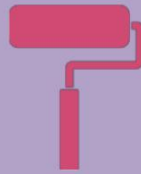


Product Data Sheet



PROFESSIONAL TRADE PLASTER PRIMER

No	MPT21
Date	01/21

Medal Professional Trade products are manufactured to the quality and performance standards to ensure complete customer satisfaction.

DESCRIPTION

Professional Trade Plaster Primer is a solvent-based, lower odour alkali resistant primer, which has been specially developed to protect interior and exterior masonry surfaces. This product can also be used for new interior walls to be finished with an enamel-based or water based paint, or as a binding agent for very porous surfaces.

PRODUCT USES

Suitable for Cement Plaster, Asbestos/Fibre Cement, Gypsum Plaster, Brickwork or Soft board.

PRODUCT BENEFITS

Primer & Sealer
Alkali Resistant
Apply with Brush or Mohair Roller Interior & Exterior Use
Quality Guaranteed

SURFACE PREPARATION

New Surfaces: Surface/s must be thoroughly clean, dry and in sound condition before commencing work.

Cement Plaster/ Brickwork/ Asbestos or Fibre Cement: Apply one coat of Professional Trade Plaster Primer, followed by one coat of Professional Trade Universal Undercoat and two topcoats of paint in the desired finish and colour.

Gypsum Plaster: Apply one coat of Professional Trade Plaster Primer thinned by 10% with Mineral Turpentine to aid penetration. Apply one coat of Professional Trade Universal Undercoat (if applicable) and two topcoats of paint in the desired finish and colour.

Previously Painted Surfaces: Surface/s in poor condition such as Powdery/Chalked Pva or Lime-Wash. Thoroughly clean and prepare surface by wire brushing and removing all dirt, grease, grime and flaking paint before painting. Apply one coat of Professional Trade Plaster Primer, followed by one coat of Professional Trade Universal Undercoat (if necessary) and two topcoats of paint in the desired finish.

APPLICATION

Stir the contents thoroughly before use. This product should be applied without thinning. If thinning is required reduce by 10% max. Apply this product with a paintbrush or (short nap) paint roller, and allow overnight drying time before applying the final coat/s of paint. Clean tools (brushes & rollers) with Mineral Turpentine immediately after use.

COLOURRANGE

White.

SPREADING RATE

This product will cover approximately 4-6m² /litre, depending on surface porosity.

TECHNICAL DATA

Type	Solvent-Based
Finish	Matt
Drying Time @ 25°C	Touch Dry : 40 Minutes
	Hard Dry : 16 Hours
Re-coating Time	16 Hours
Viscosity	80-85 KU
Specific Gravity	1.3 kg / litre
Storage	Dry and Cool area
Pack Size	1; 5 and 20L

PRECAUTIONS

Do not apply if rain is imminent.
Apply at an ambient temperature of 5 to 35°C.
Keep out of reach of children.
Wash hands with Mineral Turpentine immediately after use.
Skin or Eye contact: clean with fresh water and consult a physician if necessary.
Wear protective clothing such as Overall, Gloves; Goggles etc.
Please ensure that the product is overcoated within 72 hours of painting.

TOOL CHECKLIST

Paintbrush & Paint Roller Tray set; Plastic Drop Sheet; Mutton Cloth; Sandpaper; Masking Tape; Mineral Turpentine; Crack filler; Paint Scraper; Stepladder.

QUALITY GUARANTEE

This product is quality guaranteed to last under normal conditions, provided that the "Instructions for Use" appearing on the reverse side of each can have been correctly followed by the customer.

