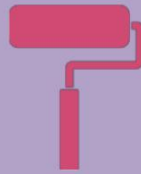


Product Data Sheet



PROFESSIONAL TRADE LOW SHEEN ACRYLIC

| | |
|------|-------|
| No | MPT9 |
| Date | 01/23 |

Medal Professional Trade products are manufactured to the quality and performance standards to ensure complete customer satisfaction.

DESCRIPTION

Professional Trade Low Sheen Acrylic is a superior quality paint with a fine-smooth finish, which has been developed to protect and beautify all interior and exterior surfaces. This product is fully washable with excellent dirt and stain resistance. It can be applied to a variety of surfaces where a durable low-sheen finish is required.

PRODUCT USES

- New and previously painted surfaces made from Cement Plaster, Concrete, Brickwork & Gypsum Plaster.
- Asbestos/Fibre Cement Fascias & Ceiling Boards.
- Primed Metal & Wooden Surfaces.
- Ideal for Interior & Exterior Walls.

PRODUCT BENEFITS

- Stain & Dirt Resistant
- Fully Washable
- Good Scrub Resistance
- Excellent Hiding Power
- Apply with Brush or Roller
- Interior & Exterior Use
- 8 Year Guarantee

SURFACE PREPARATION

New Surfaces: Surface/s must be thoroughly clean, dry and in sound condition before painting.

Concrete/Cement Plaster: Apply one coat of Professional Trade Plaster Primer, followed by two coats of Professional Trade Low Sheen Acrylic.

Asbestos/Fibre Cement: Apply one coat of Professional Trade Plaster Primer, followed by two coats of Professional Trade Low Sheen Acrylic.

Iron & Steel: Apply one coat of Medal Dual Steel Primer, followed by one coat of Professional Trade Universal Undercoat and two coats of Professional Trade Low Sheen Acrylic.

Timber/Wood: Apply one coat of Medal Pink Wood Primer, followed by one coat of Professional Trade Universal Undercoat and two coats of Professional Trade Low Sheen Acrylic.

Gypsum Plaster (Rhinolite/Rhinoglide): Apply one coat of Professional Trade Plaster Primer, followed by two coats of Professional Trade Low Sheen Acrylic.

Previously Painted Surfaces: Thoroughly clean and prepare surface by removing all dirt, grease, grime and flaking paint before painting. Powdery surfaces must be treated with one coat of Professional Trade Bonding Liquid, prior to applying two coats of Professional Trade Low Sheen Acrylic. Enamel based surfaces must be cleaned and prepared correctly. Sand lightly and apply one coat of Professional Trade Universal Undercoat, followed by two coats of Professional Trade Low Sheen Acrylic.

APPLICATION

Stir the contents thoroughly before use. This product should be applied without thinning. For colour consistency, ensure that batch numbers are the same on all cans. Apply this product with a paintbrush or (furpile / lambswool) paint roller, and allow +/- 4 hours drying time between coats. Allow paint to cure (hard dry) for 7 days before attempting to clean the surface. Do not apply when rain is imminent. Clean tools (brushes & rollers) with Water immediately after use.

COLOURRANGE

Available in white and standard colours.

SPREADING RATE

This product will cover approximately 6-8m² /litre, depending on surface porosity.

TECHNICAL DATA

| | |
|--------------------|---|
| Type | Acrylic |
| Finish | Low -Sheen |
| Drying Time @ 25°C | Touch Dry: 30 Minutes Hard Dry : 4 Hours |
| Re-coating Time | 4 Hours |
| Viscosity | 95-108 Krebs units |
| Specific Gravity | 1.42 kg / litre |
| Wash ability | +/- 10.000 Scrubs |
| Storage | Dry and Cool area |
| Pack Size | 5 & 20L |

PRECAUTIONS

- Do not apply if rain is imminent.
- Apply at an ambient temperature of 5 to 35°C.
- Keep out of reach of children.
- Wash hands with Water immediately after use.
- Skin or Eye contact: clean with fresh water and consult a physician if necessary.

TOOL CHECKLIST

Paintbrush & Paint Roller Tray set;
Plastic Drop Sheet; Mutton Cloth;
Sandpaper; Masking Tape; Crack filler;
Paint Scraper; Stepladder

QUALITY GUARANTEE

Medal Paints will guarantee this product for a period of eight years subject to the adherence by the purchaser to comply with the "Instructions for Use" appearing on the reverse side of each can. Refer to the back of pack for more details.

The information contained in this data sheet is provided in good faith and correct to the best of our knowledge, but Medal Paints reserves the right to change these specifications if deemed necessary.

