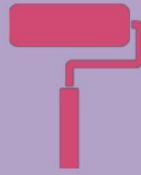


# Product Data Sheet



## PROFESSIONAL TRADE WOOD VARNISH

No	MPT10
Date	06/22

Medal Professional Trade products are manufactured to the quality and performance standards to ensure complete customer satisfaction.

### **DESCRIPTION**

Professional Trade Wood Varnish is an economical product suitable for Interior and Exterior wooden surfaces. A durable product that can be applied to a variety of new and previously varnished wooden furniture, doors, window frames and skirting boards.

### **PRODUCT USES**

- ❑ Interior and Exterior Wooden Surfaces made from Pine or Meranti.
- ❑ Wooden Fascias & Knotty Pine Paneling, Ceilings and cupboards made from wood.
- ❑ Wooden Doors, Window Frames, Skirting Boards and Indoor/Outdoor Furniture.

### **PRODUCT BENEFITS**

- ❑ Durable
- ❑ Hard Wearing
- ❑ Washable

### **SURFACE PREPARATION**

**New Surfaces:** Surface/s must be thoroughly clean, dry and in sound condition before commencing to varnish. Apply one coat of Professional Trade Wood Varnish thinned with 10% Medal Mineral Turpentine, followed by two coats of Professional Trade Wood Varnish applied un-thinned. For best results, sand lightly in the direction of the wood grain between coats.

### **Previously Varnished or Painted Surfaces:**

Thoroughly clean and prepare surface by removing all dirt, grease, grime and flaking paint or varnish. Sand lightly to a smooth finish. Apply two coats of Professional Trade Wood Varnish un-thinned and allow overnight drying between coats. For best results, sand lightly between coats in the direction of the wood grain. Painted surfaces must be stripped back to bare wood then follow the "Instructions for Use" as described under New Surfaces.

**Warning:** This product is not suitable for use on Wooden Floors, Gum poles or Timber Fencing.

### **APPLICATION**

Apply this product with a paint brush or mohair paint roller and allow +/- 16 hours (overnight) drying time between coats. Allow paint to cure (hard dry) for 7 days before attempting to clean the surface. For best results apply two coats of Professional Trade Wood Varnish.

Stir the contents thoroughly before use.

This product should be applied as described under surfaces preparation. For colour consistency, ensure that batch numbers are the same on all cans.

Clean utensils brushes & roller with Mineral Turpentine immediately after use.

### **SPREADING RATE**

This product will cover approximately 8-10m<sup>2</sup> /litre depending on surface porosity.

### **TECHNICAL DATA**

Type	Alkyd Based
Finish	Gloss
Drying Time @ 25°C	Touch Dry: +/- 4 hours Hard Dry: +/- 16
Hours	
Re-coating Time	+/- 16 Hours
Viscosity	60 -65 Krebs units
Specific Gravity	0.90 kg / litre
Storage	Dry and Cool
area	
Pack Size	1Lt; 5Lt

### **PRECAUTIONS**

- ❑ Do not apply if rain is imminent.
- ❑ Apply at an ambient temperature lower than 35°C.
- ❑ Wash hands with soap and water and equipment with mineral turpentine after use.
- ❑ Skin or Eye contact: clean with fresh water and consult a physician if necessary.

### **TOOL CHECKLIST**

Paint Brush & Paint Roller Tray set; Plastic Drop Sheet; Mutton Cloth; Sandpaper; Masking Tape; Mineral Turpentine; Stepladder.

### **QUALITY GUARANTEE**

This product is quality guaranteed to last under normal conditions, provided that the "Instructions for Use" appearing on the reverse side of each can have been correctly followed by the customer.

