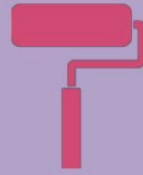


Product Data Sheet



PROFESSIONAL TRADE PLASTERBOND

No	MPT1
Date	01/17

Medal Professional Trade products are manufactured to the quality and performance standards to ensure complete customer satisfaction.

DESCRIPTION:

Professional Trade Plasterbond is a bonding agent, which has been specifically developed to provide a key for surfaces to be plastered with Cement or Gypsum plaster. Plaster Bond can also be used as a keying agent with Cement – Based tile adhesive, tile grout and slurries. This product can also be applied directly to a sound and smooth surface painted with an Acrylic Pva.

PRODUCT RECOMMENDED USES:

- A Bonding Agent for new Cement & Gypsum Plaster.
- A Bonding Agent for use with Evercure EM22.
- A Keying Agent with Tile adhesive or tile grout.

PRODUCT BENEFITS

- Excellent Bonding Agent
- Provides a Strong Bond
- Apply with Brush or Roller
- Interior & Exterior Use
- Quality Guaranteed

SURFACE PREPARATION

New Surfaces: Surface/s must be thoroughly clean and in sound condition prior to using this product.

Cement Plaster: Apply one coat of Professional Trade Plasterbond with a brush or paint roller, followed by a scratch coat of plaster while this product is still wet. Allow the surface to dry before applying the cement plaster.

Gypsum Plaster: Clean and prepare surface as described above. Apply one coat of Professional Trade Plasterbond and while the surface is still wet prior to applying the gypsum plaster.

Ceramic Tile and Tile Grout:

Mix 1 part of Professional Trade Plasterbond with 2 parts Tile adhesive.
Mix 1 part of Professional Trade Plasterbond with 2 parts of tile grout.

Evercure EM22:

Mix 2 parts Professional Trade Plasterbond with 1 part Evercure EM22. Mix well.

Previously Painted Surfaces: Thoroughly clean and prepare surface by removing all dirt, grease, grime and flaking paint before painting. Powdery surfaces must be sealed with one coat of Medal Plasterbond, prior to applying two coats of any Medal Branded Preferred PVA Topcoat.

APPLICATION

Stir the contents thoroughly before use. This product should be applied without thinning. Apply Professional Trade Plasterbond as described under New Surfaces for cement or gypsum-plastered surfaces. Apply with a paintbrush or paint roller, and allow 1 to 3 hours drying time between coats. Clean tools (brushes & rollers) with Water immediately after use.

COLOURRANGE

Clear finish.

SPREADING RATE

Not applicable.

TECHNICAL DATA

Type	Water based
Finish	Clear
Drying Time @ 25°C	Touch Dry: 1Hour
Viscosity	20-30 secs Ford 4 cup
Hard Dry	1-3 Hours
Storage	Dry and Cool area
Pack Size	5Lt

PRECAUTIONS

- Do not apply if rain is imminent.
- Apply at an ambient temperature of 5 to 35°C.
- Keep out of reach of children.
- Wash hands with Water immediately after use.
- Skin or Eye contact: clean with fresh water and consult a physician if necessary.
- Wear protective clothing such as Overall, Gloves; Goggles etc.

TOOL CHECKLIST

Paint Brush & Paint Roller Tray set;
Plastic Drop Sheet; Mutton Cloth;
Sandpaper; Masking Tape; Stepladder.

QUALITY GUARANTEE:

This product is quality guaranteed to last under normal conditions, provided that the "Instructions for Use" appearing on the reverse side of each can have been correctly followed by the customer.

